


# KRINNER



## KRINNER GROUND SCREWS IN THE SOLAR SEGMENT

The pioneer in sustainable foundation construction

# KRINNER SOLAR APPLICATIONS

---

KRINNER ground screws are an economical and sustainable solution for the installation of ground mount solar systems. KRINNER, as the original designer and patent holder of ground screw technology, has extensive expertise and experience in ground-mounted arrays.

KRINNER's knowledge, product innovation and manufacturing have led to significant growth and market acceptance for ground screws within the commercial solar markets, with hundreds of thousands of KRINNER ground screws being installed annually for solar ground mounted arrays.

KRINNER's management of all quality related processes, purpose-developed machinery and global manufacturing, distribution and installation support place KRINNER in a unique position. A position we are confident will allow us to highlight project efficiencies within your commercial and residential solar ground-mount installations.

## RESIDENTIAL SOLAR

---

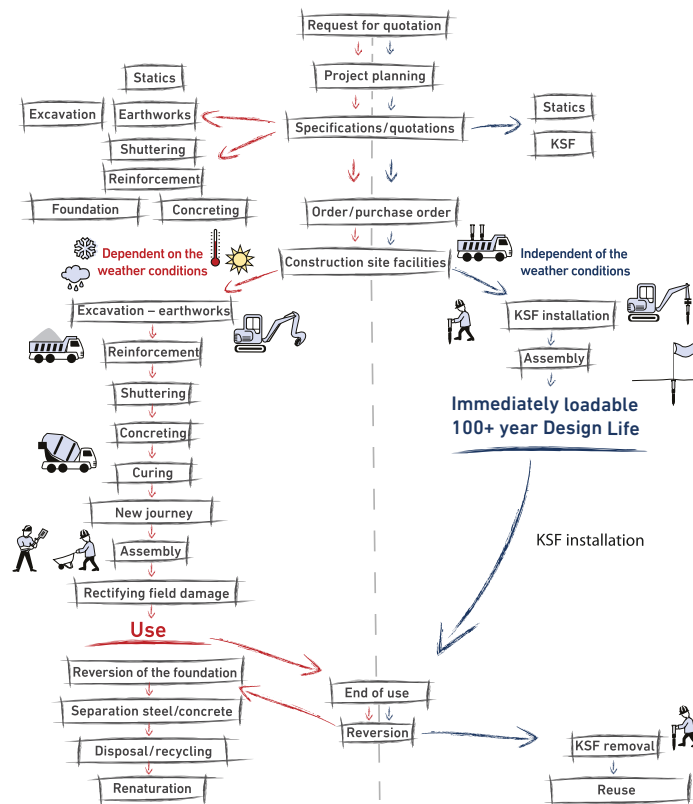
KRINNER's expertise and product offerings represent real benefits to your solar ground mount projects. KRINNER ground screws are a compatible foundation system for ground mount solar racking systems utilizing a 2-inch or 3-inch upright support structure. KRINNER is committed to offering everyone the experience of quicker, cleaner and smarter foundations on their solar projects.



# KRINNER SYSTEM ADVANTAGES

## Traditional Concrete Foundations

## KRINNER Ground screw system



# KRINNER GROUND SCREWS

Sustainable Foundation for Solar Projects

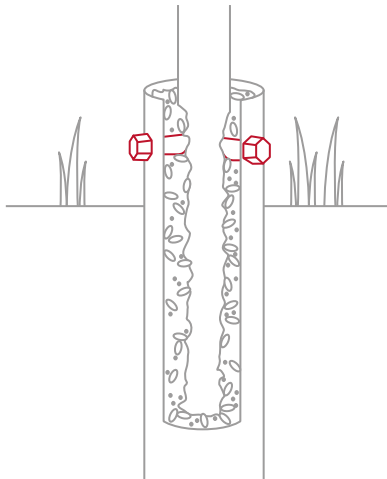
## G-SERIES



Outer-Ø (mm)	114.30	114.30	114.30	114.30	76.10	76.10	76.10	76.10
Inner-Ø (mm)	107	107	107	107	71	71	71	71
Length (mm)	2100	1600	1300	1000	2100	1600	1300	1000
Nut	4xM16	4xM16	4xM16	4xM16	4xM16	4xM16	4xM16	4xM16
Length of helix (mm)	1100	700	700	500	1150	850	750	500



# KRINNER INSTALLATION PROCESS



## 1. SUBSOIL EVALUATION

Required for loading and corrosive factoring

## 2. FOUNDATION PLANNING

Determination of screw sizing, spacing and layout

## 3. SCREW INSTALLATION

Driving of screws to depth with KRINNER supported equipment

Ensure foundation is installed plumb with the use of a level

## 4. MOUNTING OF RACKING SYSTEM

Insert tube racking and securely set with bolt connections

## 5. FILL GAPS WITH GRANULATE SOLUTION

Pour in granulate mixture for permanence and added stability

For more information on project processes for a foundation constructed with KRINNER ground screws, visit <https://www.krinner.io/en/foundation-construction/project-process/>





# EQUIPMENT

Corresponding equipment for solar applications of KRINNER ground screws

## KRE 20 - ELECTRICAL SCREW DRIVER

- 110Volt
- Approx. 3600 Nm
- Suitable up to G76 Krinner ground screws



## KRE 25 - ELECTRICAL SCREW DRIVER

- 110 Volt
- Approx. 6.000 Nm torque
- Suitable up to G114 Krinner ground screws

## KRD 30 - CATERPILLAR

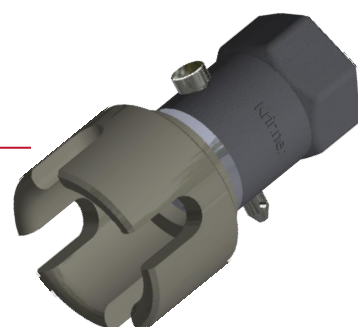
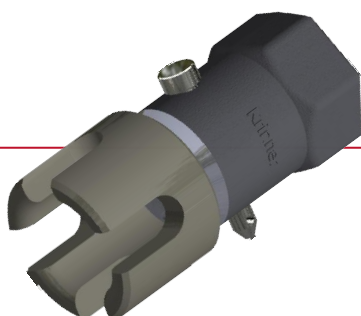
- Self propelled Caterpillar, light and maneuverable design
- Approx. 8.000 Nm torque
- 2.4 m feed stroke
- Only 1.1 t transport weight



# ACCESSORIES

Adapters for Skidsteer and Mini Excavator Drives are offered in the following configurations:

- DTG76 x 2" Hex (3325)
- DTG76 x 2.5" Hex (3332)
- DTG76 x 3" Hex (3333)
- DTG114 x 2" Hex (3221)
- DTG114 x 2.5" Hex (3317)
- DTG114 x 3" Hex (3293)



# KRINNER



## 100% ECO-FRIENDLY

KRINNER ground screws are recycleable and can be removed just as easily as they are installed

## SYSTEM ADVANTAGE

Krinner ground screws allow for a sustainable foundation within the shortest amount of time and with minimal site disturbance.



Efficient



Ecological



Safe

KRINNER Foundation Systems  
6747 Theall Road, Building A  
Houston Texas 77066  
Phone: +1 877-465-7466  
[www.krinner.io](http://www.krinner.io)  
[info@krinnerfoundations.com](mailto:info@krinnerfoundations.com)

KRINNER Schraubfundamente GmbH  
Passauer Straße 55  
D-94342 Straßkirchen  
Phone: +49 9424 94 01-80  
[www.krinner.io](http://www.krinner.io)  
[service@krinner.com](mailto:service@krinner.com)