

Technical Data Sheet V 76x3,6

Basic Info

KSF V 76x3,6x 2000 PT HDG	KSF V 76x3,6x 1500 PT HDG	KSF V 76x3,6x 1500 EH HDG	KSF V 76x3,6x 1500 ET HDG	KSF V 76x3,6x 1500 E HDG	KSF V 76x3,6x 860 E HDG	KSF V 76x3,6x 300 M16 HDG	
Nominal length (mm)	2000	1500	1500	1500	1500	860	300
Tube diameter (mm)	76	76	76	76	76	76	76
Weight (kg)	14	11	12	10	10	5	4
Steel grade (tube)	S 235	S 235	S 235	S 235	S 235	S 235	S 235
Item number	A0500	A0499	A0497	A0498	A0496	A0503	A0502

Construction

- Continuous welded helix
- Average cink layer thickness 70 µm according to DIN EN ISO 1461
- Extra hard Hardox drive point
- 2,5-mm-helix

Accessories



Screw Set KSF V 76 M16
Art.-Nr. A1392



**KSF V
76x3,6x300 M16
HDG**



**KSF V
76x3,6x2000 PT
HDG**



**KSF V
76x3,6x1500
ET HDG**



**KSF V
76x3,6x1500
EH HDG**



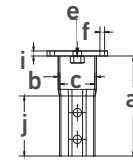
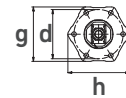
**KSF V
76x3,6x860 E
HDG**



sustainable · durable · revolutionary

Subject to technical changes!

Krinner Schraubfundamente GmbH | Passauer Strasse 55 | D-94342 Strasskirchen



Technical Data

	KSF V 76x3,6x 2000 PT HDG	KSF V 76x3,6x 1500 PT HDG	KSF V 76x3,6x 1500 EH HDG	KSF V 76x3,6x 1500 ET HDG	KSF V 76x3,6x 1500 E HDG	KSF V 76x3,6x 860 E HDG	KSF V 76x3,6x 300 M16 HDG
a	Length (mm)						
	2000	1500	1500	1500	1500	860	300
b	Outer diameter (mm)						
	76	76	76	76	76	76	76
c	Inner diameter (mm)						
	69	69	69	69	69	69	69
d	Pitch circle diameter (mm)						
	-	-	-	-	-	-	150
e	Central thread						
	-	-	-	-	-	-	M16
f	Pitch circle holes (mm)						
	-	-	-	-	-	-	6 x Ø 14
g	Flange wrench size (mm)						
	-	-	-	-	-	-	166
h	Flange outer diameter (mm)						
	-	-	-	-	-	-	182
i	Flange thickness (mm)						
	-	-	-	-	-	-	10
j	Octagon connection height (mm)						
	180	180	180	180	180	180	180
k	Thread length (mm)						
	550	550	-	500	-	-	-
l	Thread pitch (mm)						
	50	50	50	50	-	-	-

